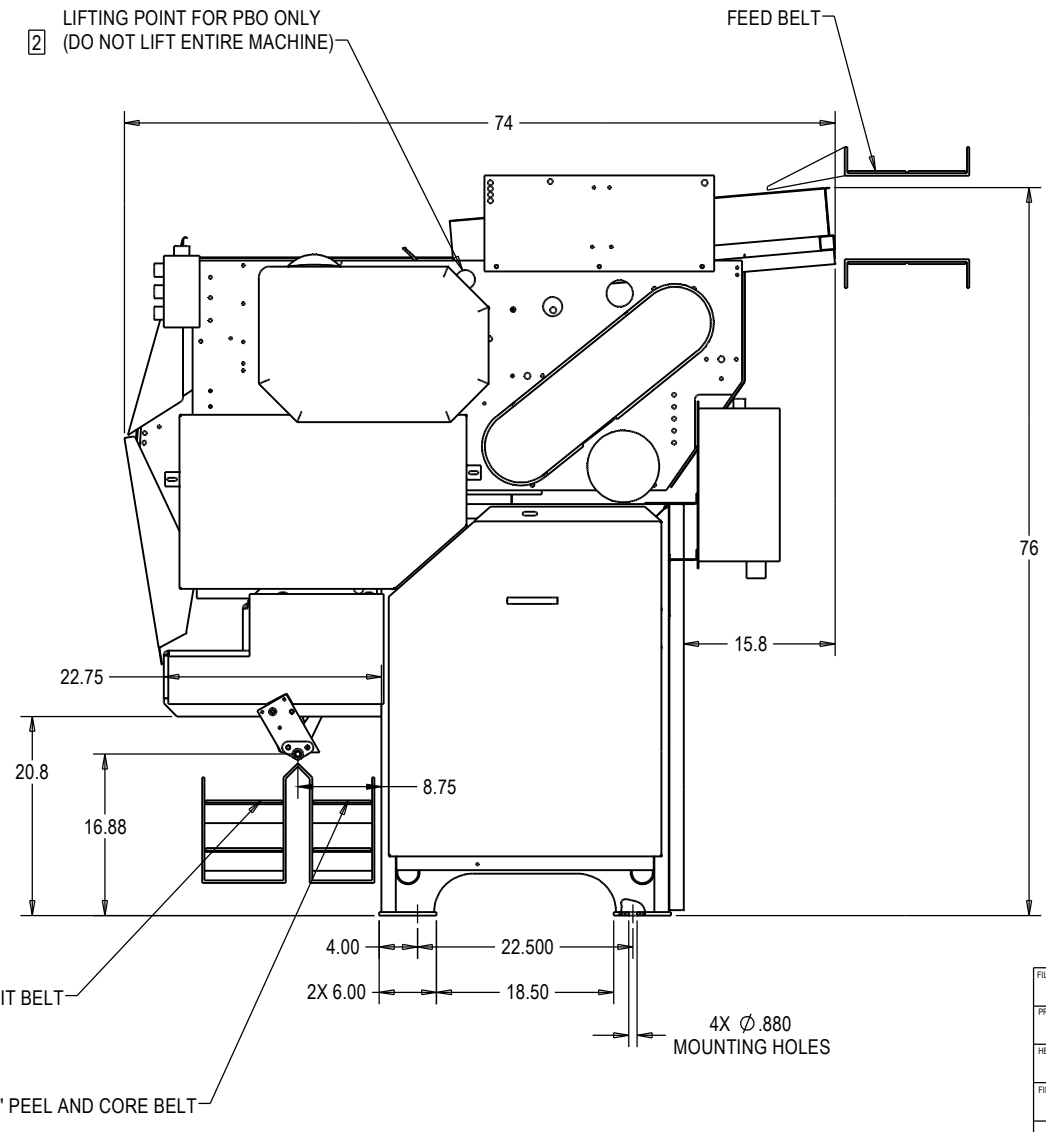
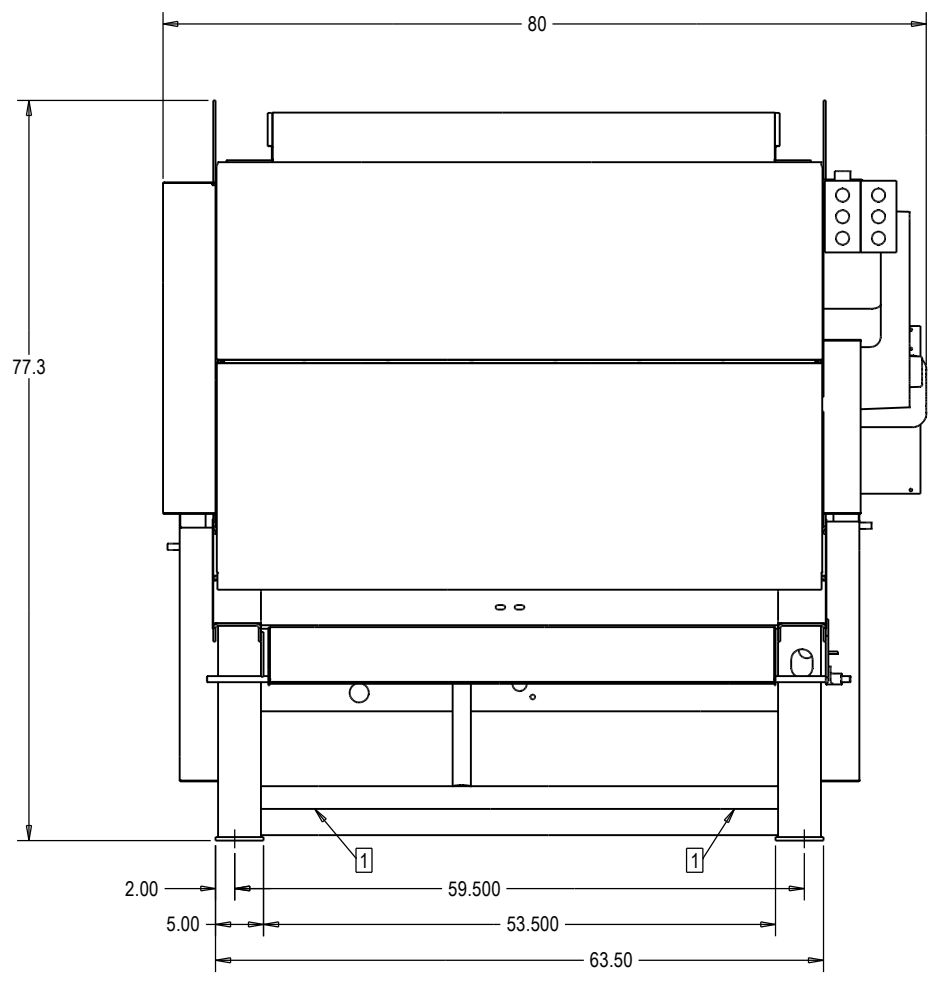
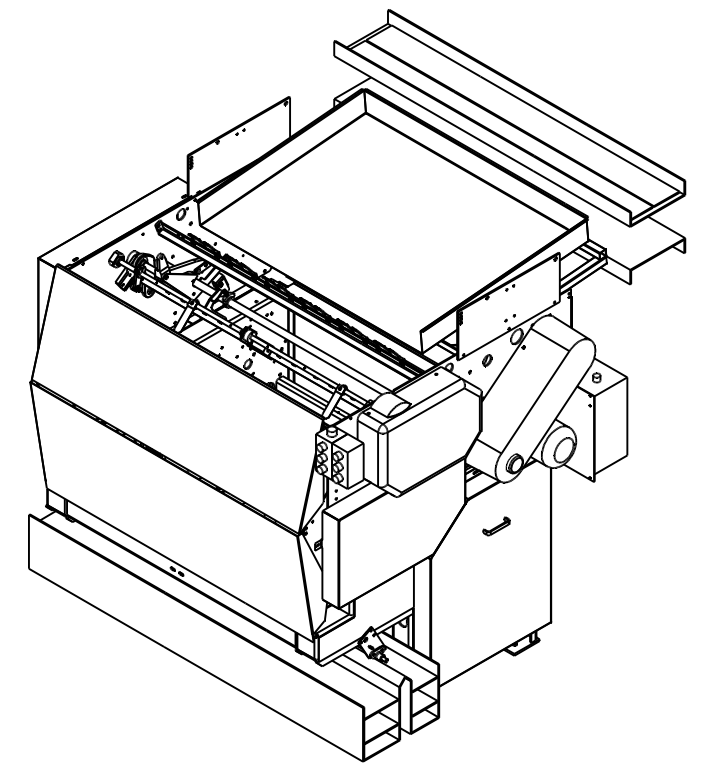
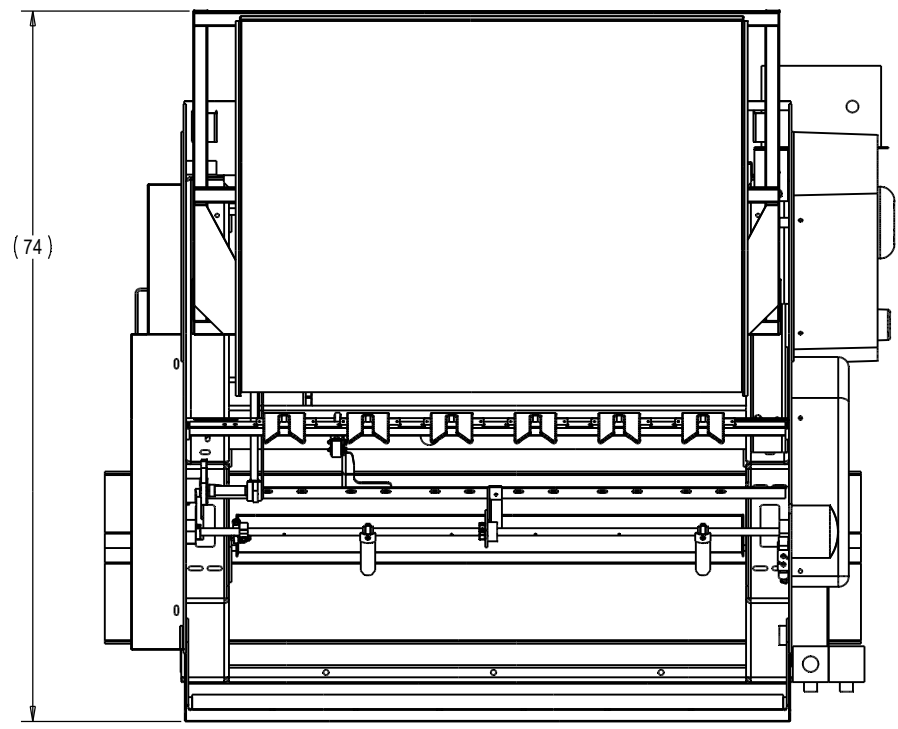


REVISIONS				
REV	ECN NO	DESCRIPTION	DR	DATE
		RELEASED FOR PRODUCTION	JVP	5/27/2009



- NOTES:
- USE SPECIAL LIFTING BAR (PART NO. 3370.0000.AR) FOR PBO , AT THE LIFTING POINTS SHOWN. REMOVE GUARDS AS REQUIRED FOR LIFTING.
  - THE PEELER AND PBO SHOULD BE LIFTED WITH A FORK LIFT FROM THE TWO ROUND BARS UNDER THE MACHINE. REMOVE GUARDS AS REQUIRED BEFORE LIFTING. APPROXIMATE WEIGHT OF PELLER WITH PBO = 4500LBS.

FILENAME	WHERE USED	QTY	ITEM	QTY	PART NUMBER	MATERIAL/DESCRIPTION
3370-0010-10	UNLESS OTHERWISE SPECIFIED					
PROJECT Standard Pear Layouts	PARTS LIST					
HEAT TREAT	TITLE LAYOUT, STD PEAR W/PBO GENERAL					
FINISH	APPROVALS					
THIRD ANGLE PROJECTION	DATE 5/26/09					
	DRN JVP					
	ENG					
	PRODUCTION RELEASE					
	SCALE 1:10					
	SHEET 1 OF 1					
	SIZE D					
	DRAWING NUMBER 3370.0010.10					
	REV -					

DWG NO 3370.0010.10  
 SHEET 1 OF 1

