

# ATLAS PACIFIC CHERRY STEMMER

MANUFACTURED BY: ATLAS PACIFIC ENGINEERING COMPANY • PUEBLO, COLORADO USA • 719.948.3040 • FAX 719.948.3058



## CHERRY STEMMER

### Machine Operation

From the receiving area, the cherries flow into the hopper, then roll into place in the circular perforations of the lower conveyor belt. As the belt carries the fruit forward, a series of impellers and soft brushes gently roll the cherries backward to ensure filling the maximum number of perforations. On this specially designed belt, rubber strips beneath the perforations prevent the cherries from falling through and allow flexibility for the stems to position either upward or downward. Then buttoned head pulleys revolve into place locking the stems into position. As the pulleys continue to revolve, the cherries are moved forward and brushed free of their stems at the base by soft rubber rollers. While the cherries roll gently into the collecting area, the locked-in stems move along the belt until the buttoned head pulleys disengage to allow the upper stems to be brushed into a screw conveyor and the lower stems to be dropped into a drip pan and flush discharged.

The special design of the Atlas Pacific Cherry Stemmer assures an operation that is gentle, smooth, and precise to ensure both protection of the fruit and accurate removal of whole stems. Years of trouble-free, high-capacity performance have proved its efficiency and durability.

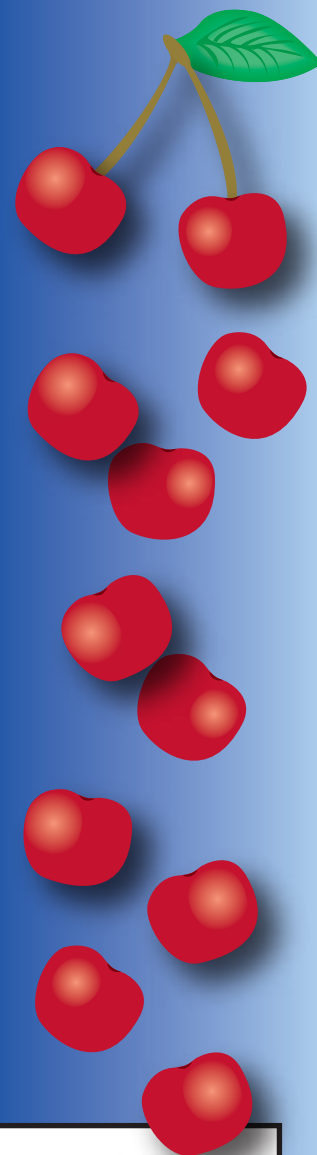
### Technical Assistance

Atlas Pacific, with over fifty years of experience in the food industry, has fruit processing machines in over 23 countries worldwide. To service these installations, Atlas employs a dedicated team of service technicians, located around the world, ready to assist customers with



Spreader roll/orienter belt

**Unique in its simplicity of design, the Atlas Pacific Cherry Stemmer operates with a minimum of moving parts – all of them standard, and exposed for ease of lubrication and maintenance. It is also versatile, in that the fruit can be fed into the receiving area of the Cherry Stemmer either manually or mechanically.**



*All machines meet OSHA and UL508 requirements. Machines bearing the CE Mark are also available (shown).*



Discharge belts

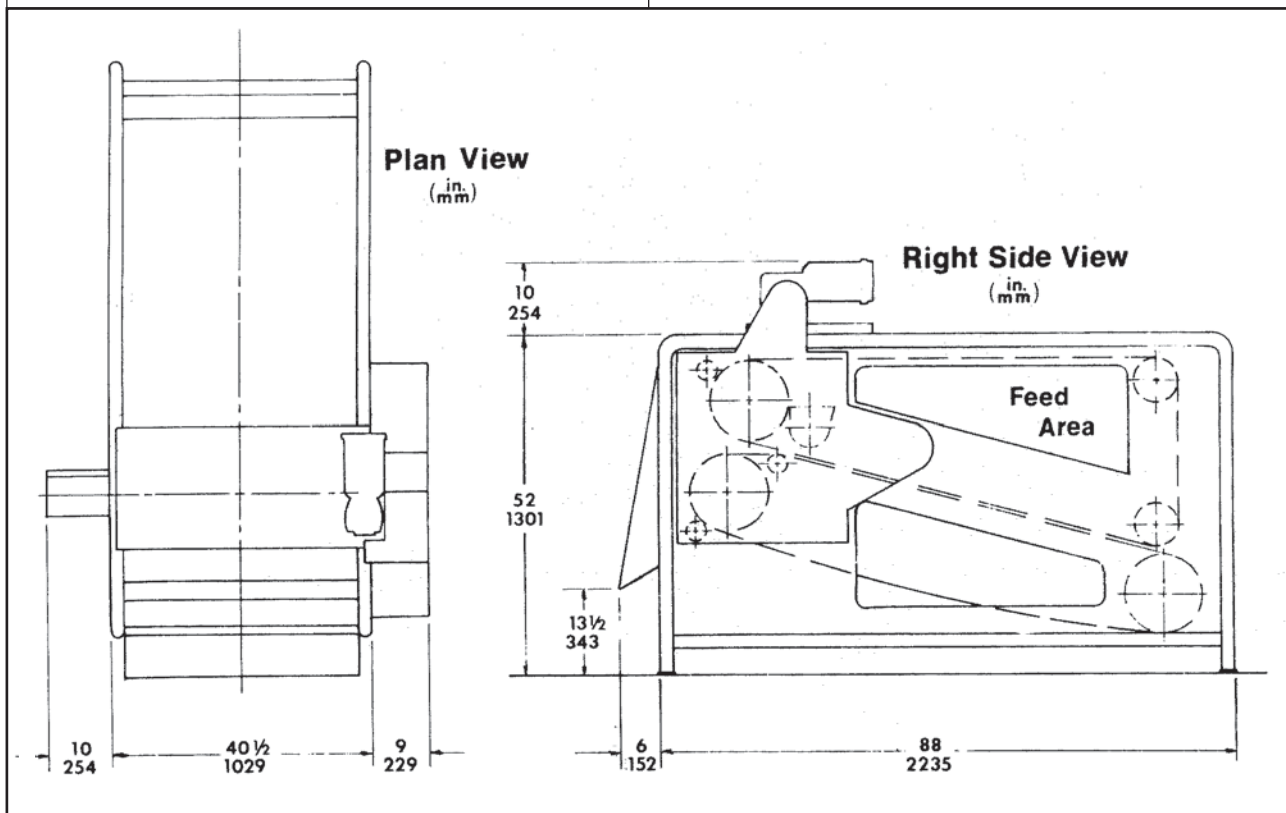
## CHERRY STEMMER

Technical Assistance continued...

machine inspections, off-season overhauls, seasonal start-up, or with troubleshooting. Along with service support, Atlas is available to assist with plant layouts and application engineering support as required.

### TECHNICAL SPECIFICATIONS

CAPACITY (Tons/Hr.):	IMPERIAL	METRIC
Fresh	4 Tons	3.6 Metric Tons
Brined	2 1/2 Tons	2.3 Metric Tons
FRUIT SIZE	0.55 - 1.06"	14 mm - 27 mm
DRIVE, GEAR MOTOR	2 Hp	1.5 kw
WATER REQUIREMENT	20 G.P.M.	75.7 L.P.M.
WEIGHT	2,000 lbs.	907 Kg
EXPORTED CRATED WEIGHT	3,000 lbs.	1,361 Kg
CUBIC MEASUREMENT CRATED	290 Cu. Ft.	8.2 Cu. M.



**ATLAS PACIFIC ENGINEERING COMPANY, INC.**

#1 ATLAS AVENUE / P.O. BOX 500 • PUEBLO, CO 81002-0500 USA  
719.948.3040 • FAX 719.948.3058

**ATLAS WESTERN REGIONAL OFFICE**

4500 NORTHSTAR WAY • MODESTO, CA 95356 USA  
209.574.9884 • FAX 209.574.0192

**ATLAS EASTERN REGIONAL OFFICE**

23 N. LOUDOUN • WINCHESTER, VA 22601 USA  
540.662.9176 • FAX 540.662.9064

**ATLAS PACIFIC EUROPE**

VIA GADAMES, 130 • 20151 MILAN • ITALY  
39.02.3800.5999 • FAX 39.02.3340.0370

**ATLAS PACIFIC AUSTRALIA**

78-80 STEWART ST. • SHEPPARTON, VICTORIA • AUSTRALIA, 3630  
61.35.821.6988 • FAX 61.35.822.2854



Atlas Pacific, whose policy is to continuously improve its products, reserves the right to discontinue or change specifications without notice and without incurring obligation.