

ATLAS PACIFIC FRESH SLICE APPLE SYSTEM

MANUFACTURED BY: ATLAS PACIFIC ENGINEERING COMPANY • PUEBLO, COLORADO USA • 719.948.3040 • FAX 719.948.4273



FRESH SLICE APPLE SYSTEM

Machine Operation

The automatic hydro or dry feed systems are newly designed with the fresh slice industry in mind. Both are made of durable stainless steel and other non-corrosive materials. Each system is designed to gently deliver apples to the orienting table, which, through the work of orienting spindles, orients the apples in an upright (on axis) position.

After the peeling and coring operation is completed, the apples are seed-celled and then transferred to the wedge slicer where they are sliced using our new and improved stainless steel, serrated, wedge blade design.

The orienter/slicer is designed with interchangeable core tubes to allow for adjustment of core size from 5/8" to 1" in diameter, ensuring both flexibility and precision of operation. The separate coring and wedge slicing operations are important (and unique to our machines) for gentle handling of the apple by reducing the pressure applied during an automatic slicing operation.

In addition to a newly designed feed-chain assembly and wedge slice blades, all other product contact parts have been re-engineered and constructed of stainless steel and/or other non-corrosive materials as preferred by the fresh cut processors and industry. Atlas Pacific Engineering is committed to being a world-class leader and supplier of apple processing equipment and other deciduous fruit processing equipment and is proud to be the preferred supplier in the fresh slice apple industry.



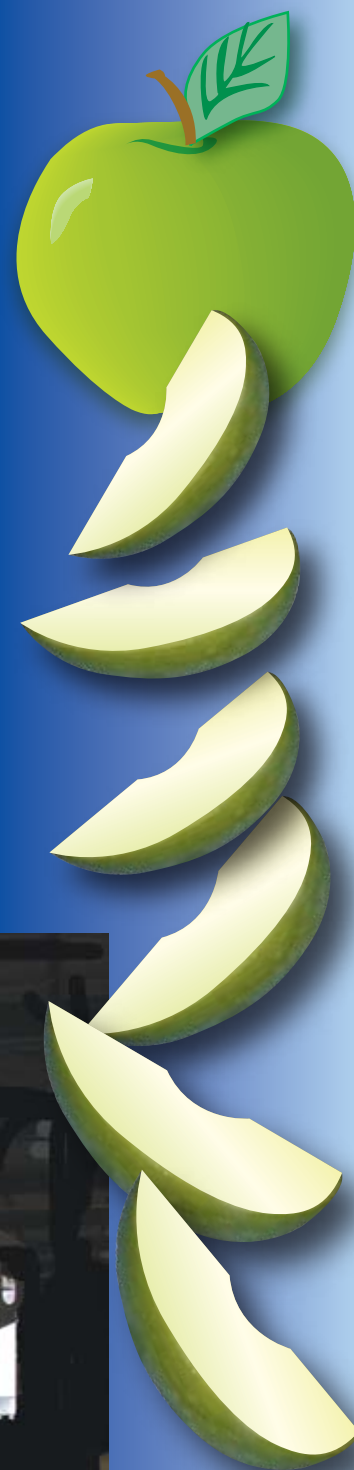
Serrated wedge blade

The Atlas Pacific Fresh Slice Apple System feeds, orients, cores and slices at speeds up to 115 apples per minute. It is specifically designed to gently handle all varieties of apples and to produce the highest yield possible. Each machine can be configured to produce wedge slices, ring slices, or combination-cut apples. The machine is rugged and is able to withstand the rigors of a long processing season.



Stainless steel machine (show model)

All machines meet OSHA and UL508 requirements. Machines bearing the CE Mark are also available with customer supplied guards (not shown).



FRESH SLICE APPLE SYSTEM

The Atlas Pacific Fresh Slice Apple System offers:

- **Apple host monitoring system.** Networked monitoring system provides almost real-time data to mechanics via a graphical interface regarding machine-operation status. System also collects infeed and finished fruit data.
- **Fresh slice wedge blade assembly.** Thinner material used to create up to 16 wedges. Serrated versions available.
- **Clean in place system.** Available Fall 2007.
- **Slice testing.** Continuous testing to determine optimal conditions for slicing to reduce cell damage.
- **VFD drive systems.** Speed control of apple peelers allow better matching of apple peeler speed to overall system speed.
- **Parts management system.** Database program to establish minimum stocking levels of repair parts to reduce delivery time of parts.

HYDROFEED

TECHNICAL SPECIFICATIONS (APPROXIMATE)

	IMPERIAL	METRIC
FRUIT CAPACITY	500 lbs	227 kg
WATER CAPACITY	200 gallons	757 liters
DRIVE	1 1/2 H.P. motor	1.1 kw
SHIPPING WEIGHT	975 lbs	445 kg
EXPORT CRATED WEIGHT	1,500 lbs	680 kg
CRATED MEASUREMENT	193 ft ³	5.5 m ³

PEELER

TECHNICAL SPECIFICATIONS (APPROXIMATE)

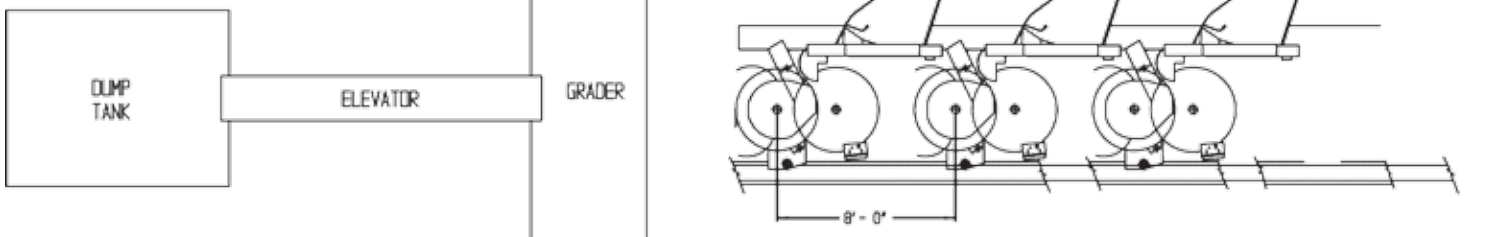
	IMPERIAL	METRIC
CAPACITY WITH SLICER	115 P.P.M.	115 P.P.M.
FRUIT SIZE RANGE	2 1/4 to 4 inches	57 – 108 mm
DRIVES	2 H.P. motor	1.5 kw
WATER REQUIREMENT	6 Gph	22.7 Lph
AIR REQUIREMENT	50 psi	3.52 kg/cm ²
WEIGHT	3,862 lbs	1,753 kg
EXPORT CRATED WEIGHT	5,112 lbs	2,321 kg
CRATED MEASUREMENT	343 ft ³	9.7 m ³

WEDGE SLICER

TECHNICAL SPECIFICATIONS (APPROXIMATE)

	IMPERIAL	METRIC
CAPACITY	115 P.P.M.	115 P.P.M.
CONFIGURATION	2, 4, 6, 8, 10, 12, 14, 16, 18 slices	
DRIVE	1/4 H.P. motor	.2 kw
WEIGHT	515 lbs	233 kg
EXPORT CRATED WEIGHT	700 lbs	318 kg
CRATED MEASUREMENT	63 ft ³	1.8 m ³

Atlas Pacific, whose policy is to continuously improve its products, reserves the right to discontinue or change specification without notice and without incurring obligation.



(Min. 10' Recommended)



ATLAS PACIFIC ENGINEERING COMPANY, INC.

#1 ATLAS AVENUE / P.O. BOX 500 • PUEBLO, CO 81002-0500 USA
719.948.3040 • FAX 719.948.4273

ATLAS WESTERN REGIONAL OFFICE

4500 NORTHSTAR WAY • MODESTO, CA 95356 USA
209.574.9884 • FAX 209.574.0192

ATLAS EASTERN REGIONAL OFFICE

23 N. LOUDOUN • WINCHESTER, VA 22601 USA
540.662.9176 • FAX 540.662.9064

ATLAS PACIFIC EUROPE

VIA GADAMES, 130 • 20151 MILAN • ITALY
39.02.3800.5999 • FAX 39.02.3340.0370

ATLAS PACIFIC AUSTRALIA

78-80 STEWART ST. • SHEPPARTON, VICTORIA • AUSTRALIA, 3630
61.35.821.6988 • FAX 61.35.822.2854